

## DESCRIPTION:

The Drass BLL-SERIES is a high-powered underwater LED light, with a 30,000 lumen standard output and 45,000 lumen in emergency.

Depending on the emergency, the light can be switched to a second emergency 'Strobe' mode (in RS 485 Modbus only). During manufacturing, the strobe parameters can be adjusted as per Client requirement.

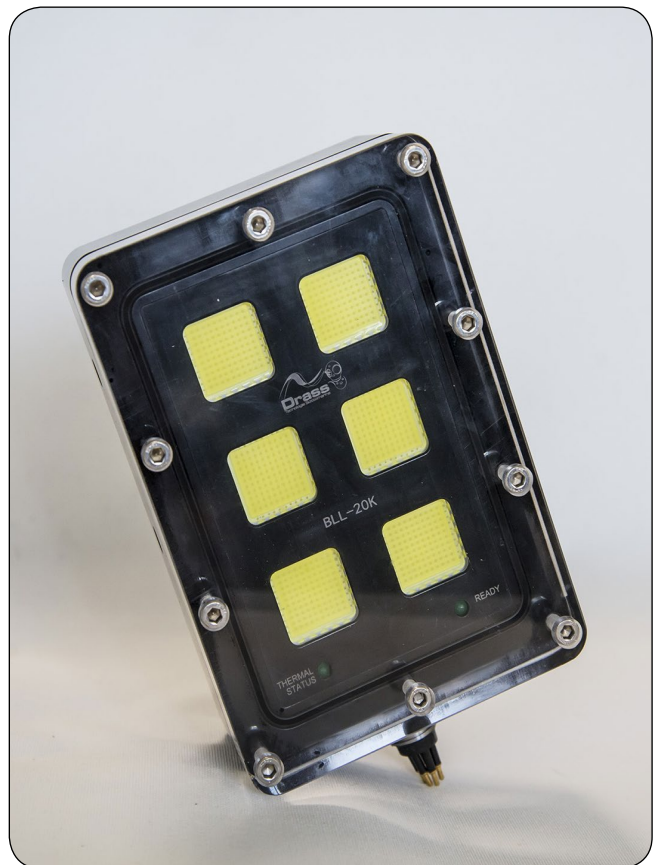
Designed, developed and tested to an operational depth of up to 6,000 msw, and manufactured with anodized aluminium for its proven resistance to corrosion.

## FEATURES:

- 30,000 lumens standard mode
- 45,000 lumens for short period
- Strobe mode
- Hard anodized aluminium
- Up to 6,000 metres operating depth (optional)

## BENEFITS OF LED LIGHTING:

- Rugged construction
- Highly shock and vibration resistant
- Average lifespan greater than 50,000 hours
- Enormous "in-service" cost saving over incandescent bulbs
- No fragile filaments



## SPECIFICATIONS - BLL 30K ELECTRICAL

Input Voltage

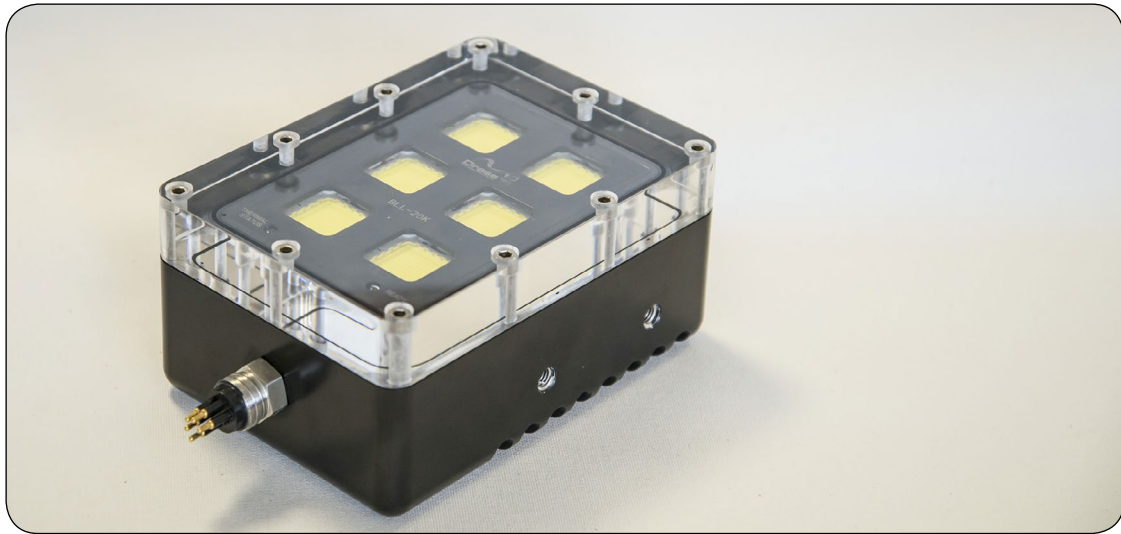
AC: 100V to 130V or 210V to 250V

DC: 130V to 150V or 260V to 300V

Max Power

550 - 600 VAC

# LED LIGHTING



### Optical Characteristics

Window/Lens	Acrylic
Typical Luminous Flux	Variable up to 30,000 lumens (10% by 10%)
Dimming Control	RS-485 modbus available

### Environmental

Operating Depth	Up to 6,000 m (19,685 ft)
Storage Temperature	-20 to +65 °C
Operating Temperature	-5 to +55 °C
Housing Material	Hard anodized Aluminium

### Mechanical

Weights in Air (Aluminium Housing)	Rear connector 3.172 kg
Weights in Water (Aluminium housing)	Rear connector 1.755 kg
Thermostat Cut-off	Thermal limiting circuit 60 °C
Standard Connector	MCBH2M or MCBH4M
Mounting Options	M8x1.25 mounting holes on top and sides

COMMERCIAL CODE	DESCRIPTION
97CE-01-01-01-00-00	Underwater LED Light